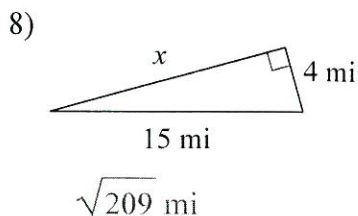
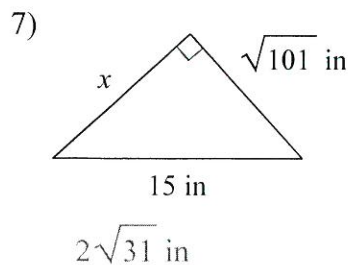
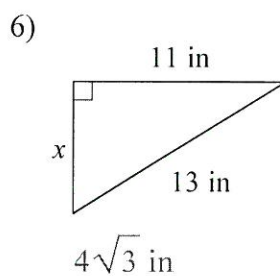
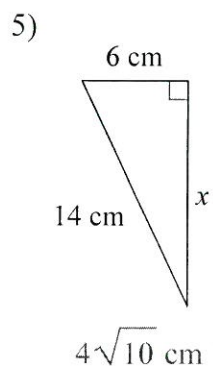
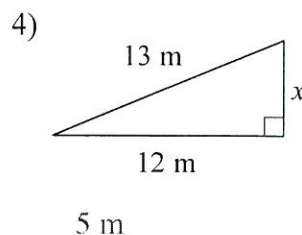
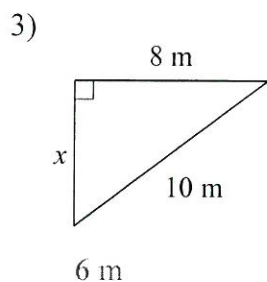
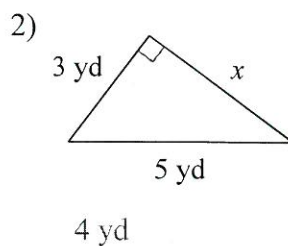
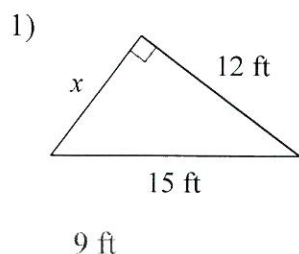


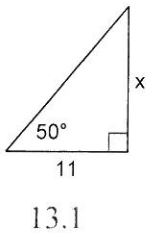
Geometry

Find the missing side of each triangle. Leave your answers in simplest radical form.



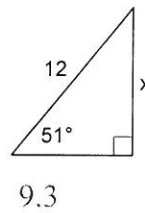
Find the missing side. Round to the nearest tenth.

9)



13.1

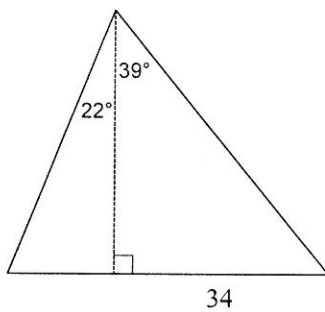
10)



9.3

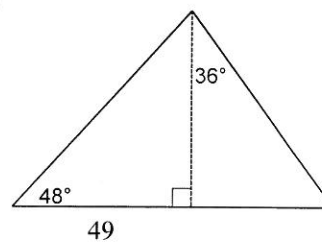
Find the area of each triangle. Round intermediate values to the nearest tenth. Use the rounded values to calculate the next value. Round your final answer to the nearest tenth. "Intermediate" meaning the steps you complete in the middle of the problem.

11)



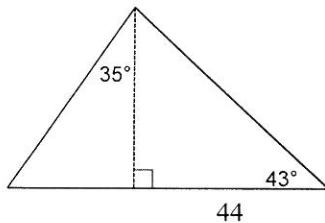
1071

12)



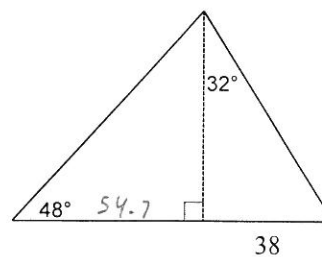
2407.2

13)



1490.4

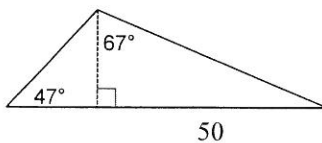
14)



2818.1

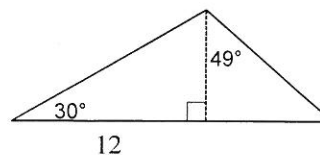
$$\begin{aligned}\tan(32^\circ) &= \frac{38}{h} \\ h &= 38 / \tan(32^\circ) \\ h &= 60.8 \\ \tan(48^\circ) &= \frac{60.8}{x} \\ x &= \frac{60.8}{\tan(48^\circ)}\end{aligned}$$

15)



739.9

16)



68.7